



[www.ci.mahtomedi.mn.us](http://www.ci.mahtomedi.mn.us)

# Mahtomedi NEWS

FROM OUR "SMALL TOWN CITY"

## MAHTOMEDI CITY HALL

600 Stillwater Road  
Mahtomedi, MN 55115  
8 a.m. – 4:30 p.m. (M-F)

## EDITORS

CITY STAFF

## MAYOR

Jud Marshall

## COUNCIL MEMBERS

Richard Brainerd  
Lilly Melander  
Luke Schlegel  
Jane Schneeweis

## CITY HALL

651-426-3344

## FIRE DEPARTMENT

651-426-1080

## PUBLIC WORKS

651-773-9730

## WASHINGTON COUNTY SHERIFF

911 OR 651-439-9381

## Rite of Spring Event to be Held at Mahtomedi Middle School

**Saturday, April 23, 2022 | 10:00 a.m. – 1:00 p.m.**

The 16th Annual RITE (Really into the Earth) of Spring event will be held on **Saturday, April 23, 2022, between 10:00 a.m. and 1:00 p.m. at the Mahtomedi Middle School located at 8100 75th Street North.**

This free family friendly event is sponsored by the City of Mahtomedi, Mahtomedi Community Education, and community volunteers. The event will feature various organizations with information tables.

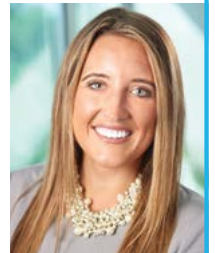
The Washington County Department of Public Health and Environment will again host the **Household Hazardous Waste Event** from **8:00 a.m. – 2:00 p.m.** (Accepted free of charge from households only – no businesses). *Proof of residency required.*

- **Household items** include mercury thermometers and thermostats, fluorescent bulbs (bundled together with rubber bands), household cleaners, sharps, syringes, needles and used EpiPens in a sealed sturdy container, computers and monitors, peripherals (keyboards, mice, speakers, etc.), printers and fax machines, TV's, DVD and VCR players and cell phones.
- **Home Improvement** – Latex/oil paint and stain, paint remover/thinner.
- **Automotive and Recreation** – Antifreeze, used motor oil and filters, propane tanks, rechargeable batteries.
- **Yard and Garden** – Insect/roach/ant killer, fertilizers/herbicides.

## ON NOVEMBER 2, 2021, TWO NEW FACES WERE ELECTED TO THE CITY COUNCIL

**LILLY MELANDER** was born and raised in Mahtomedi. A 2007 graduate from Mahtomedi High School, Lilly has a Bachelor of Science Degree in History from Iowa State University and a Master's Degree in Public Policy from Metropolitan State University.

Lilly has spent nearly a decade working in public policy, including 5 years working for the Minnesota House of Representatives, and 4 years at The Medical Alley Association, a trade association representing Minnesota's largest industry of health innovation and care. She is currently the Director of Government Affairs at the Biotechnology Innovation Organization (BIO). Lilly serves as the liaison to the Mahtomedi Parks Commission, and sits on the Governor's Suicide Prevention Task Force.



Originally from Pennsylvania, **LUKE SCHLEGEL** has lived in Mahtomedi for 10 years with his wife Kellie and his children, Maria (grade 7) and Hugo (grade 2). "We chose to move to Mahtomedi a decade ago so that our family could enjoy the great schools, parks and trails that our City offers."

Luke has a Bachelor's Degree in Economics from Carleton College and an MBA from the University of Minnesota. For the past 5 years he has been a member of the City's Finance Commission which sparked his interest to run for City Council.

Luke is also the CFO/COO of Collective Measures, a 100% employee-owned performance marketing agency. When time permits, Luke and his family enjoy spending time at their cabin in Britt, MN.

## INSIDE THIS ISSUE

- 2 Public Works News  
Community News
- 3 Forestry News
- 4 Fire Department News

## GREEN TALK INSERT

- Electric Vehicle  
Charging Stations
- Utilities Rate Increase
- Garbage & Recycle  
Container Storage  
Regulations

**THANK YOU!**

The City of Mahtomedi would like to thank Dairy Queen, Domino’s Pizza and The Wild Bean for their generous donations to the Mahtomedi Skating Party that was held on January 23, 2022. Also a special thank you to the volunteers from the City Council, Park Commission, Hockey Association and Mahtomedi School District 832.



**FOOD TRUCK FRIDAYS ARE BACK!**

**APRIL 22, 2022 | 4:30–7:00 P.M.**  
**MAHTOMEDI SCHOOL DISTRICT ED CENTER, 1520 MAHTOMEDI AVE.**

*Featuring:* Kirkwood BBQ, Brick Oven Bus, and KP Mini Donuts

*Future Food Truck Friday dates:*  
 May 13, June 10, July 15, and August 12

**APPLY NOW!  
 MAHTOMEDI GARDEN CLUB — 2022 COMMUNITY BEAUTIFICATION GRANTS**

The Mahtomedi Garden Club is once again pleased to offer grants for garden-related projects in public areas of Mahtomedi, Willernie and adjacent communities.

These funds are available because of the generous member and community support of our annual Plant Sale, Garden Tour and February Outreach Events.

Project proposals are due April 1, 2022. For information and application, visit: <https://mahtomedigardenclub.org/grants>

**CANOE STORAGE**

Canoe Storage is available at Chautauqua Park, Echo Lake Park and Mahtomedi Beach. Applications are available on the City’s website [www.ci.mahtomedi.mn.us](http://www.ci.mahtomedi.mn.us) or at City Hall. Applications will be accepted April 1st through April 15th. If you have questions please call City Hall at **651-426-3344**.

**ADOPT-A-PARK**

The City of Mahtomedi is seeking volunteers to help keep the parks and trails clean — several parks are still available to adopt. You can choose a park or trail to care for while also enjoying the outdoors with friends, family or co-workers. Suitable for teens, adults and groups. Call City Hall for more information at **651-426-3344**.

**Winter Parking Regulations are Still in Effect until April 1st**

- On street parking is not allowed in the City of Mahtomedi between the hours of 1:00 a.m. and 7:00 a.m. between November 1st and April 1st.
- No parking is allowed on any public street when the snow depth exceeds 3” until all streets are fully cleaned.
- Residents who violate the ordinance may be ticketed and/or have their vehicle towed. Be sure to inform relatives or guests who may visit your home about the winter parking restrictions so they can avoid being cited or towed.

Questions about the winter parking regulations or snow and ice control procedures may be directed to the Public Works Department at **651-773-9730**.

**Public Works Activities**

The Public Works Department has a busy spring coming up with the following necessary maintenance activities:

- **Street sweeping** will begin early to mid-April weather permitting and may take several weeks to complete. Try to avoid parking on the street between 7:00 a.m. and 3:00 p.m.
- **Hydrant flushing** is tentatively scheduled to begin around mid-April. The flushing can cause turbulence in the water mains and discoloration may result. The water is of good quality, but if discoloration occurs, run the water at an outside faucet until it is clean, usually 10-15 minutes.
- **Pothole patching** will begin early April and continue throughout the summer. If you notice a pothole, please call Public Works at **651-773-9730**.
- **Preparation of City parks** for opening will be accomplished April through May.

**Spring Reminders**

**SEASONAL LOAD LIMITS |** All roads in Mahtomedi are 5 tons with the exception of Long Lake Road to Dunbar Way, which is 7 tons to accommodate the FedEx trucks.

Weight restrictions are implemented each year in an effort to preserve and protect Mahtomedi’s road system during the thawing and refreezing associated with spring.

Streets are weakened during the spring thaw by water that becomes trapped in the gravel base below the pavement. The weight of vehicles traveling over these roads can cause the road to bend and possibly crack.

The City of Mahtomedi follows MN DOT as far as when restrictions go in effect and are lifted in the Metro, for more information please visit [www.dot.state.mn.us/materials/pvmt/design/sll/index.html](http://www.dot.state.mn.us/materials/pvmt/design/sll/index.html).

**PARKING BY MAILBOXES |** To allow for unobstructed delivery of mail, vehicles must park at least 10 feet away from either side of all mailboxes between the hours of 8:00 a.m. and 6:00 p.m. Monday through Saturday.

**STORM SEWERS — Only Rain in the Drain |** If yard waste (leaves, grass clippings), automotive fluids, and pet waste are allowed to enter storm drains, they flow directly to our lakes, rivers, and ponds. Urban storm water runoff is a major source of pollution. Do your part, one drop at a time!

**SEWER BACK-UPS |** Anyone experiencing a problem with their sewer system should notify the Public Works Department immediately at **651-773-9730**. Call the City before you contact a drain cleaning service. The main sewer line will be investigated and the necessary action taken.

# Green TALK

Published by the City of Mahtomedi and the Environmental Commission

MARCH-APRIL 2022



## NOW AVAILABLE! Electric Vehicle Charging Stations

The City of Mahtomedi's two electric vehicle charging stations are now up and running. They are compatible with all electric vehicles! There is one ZEFNET Level 2 single port wall mount 7.7 kw charging station installed on the East side of Mahtomedi City Hall. The second is a ZEFNET dual port 15.4 kw per plug charging station installed at Veteran's Memorial Park. Go to <https://www.zefenergy.com> for more information.

## Utility Rate Increase Effective January 1, 2022

Utility rates have increased in the water, sewer and stormwater utility funds as approved in the 2022 Budget. These increases are needed to support necessary capital improvements and repairs needed to the systems. The new rates are:

### Residential Water Rates

The water rate structure is made up of two components; the fixed demand charge per quarter and the tiered usage charge.

The residential single family **fixed water demand charge** for water has increased from \$20.01 per quarter to \$20.81.

The residential **tiered water usage charge** per unit (1 unit = 748 gallons of water) increased to:

**Tier 1:** 0-20 Units (100 cubic feet per unit or 0-14,960 gallons) — \$3.18

**Tier 2:** 21-33 Units (14,461-24,684 gallons) — \$3.33

**Tier 3:** 34-45 Units (24,685-33,660 gallons) — \$4.03

**Tier 4:** Over 45 Units (Over 33,660 gallons) — \$5.63

Commercial, schools, irrigation and multi-family customers also have separate tiered structures designed to promote water conservation for their types of usage.

### Residential Sewer Rates

**Sewer demand charge** increased from \$16.33 to \$16.82 per quarter.

**Sewer usage charge** increased from \$6.16 per unit (100 cubic feet) to \$6.35.

**Non-metered sewer service charge** increased from \$157.86 to \$162.60 per quarter.

### Residential Stormwater Charges

Single family dwelling unit fee increased from \$34.03 to \$35.39 per quarter.

### Residential Recycling Rate

Recycling charge fee increased from \$9.15 to \$9.50 per quarter.

## Garbage & Recycle Container Storage Regulations

The City Code outlines how residents should store and set out their garbage and recycling containers. If homeowners follow these standards, it will help improve the appearance of neighborhoods by limiting the time that containers are at the street and defining where the containers are to be stored between collection days.

Garbage and recycling containers are to be stored inside of a building on the site or in back of the front corner of the house at all times other than the day on which your garbage or recycling is collected. The containers may be set out beginning at 5:00 p.m. on the day before collection and they must be removed by 11:00 p.m. on the day of collection. **When you place your containers out, they should be on your yard or driveway, behind the curb or edge of the street.** Placing containers in the street interferes with traffic, street sweeping, snowplowing and other activities.

Your cooperation with these expectations will not only improve the appearance of our neighborhoods, but also help refuse and recycling haulers and City employees serve you better.







## Avoid Energy Waste in Cold Weather

The Minnesota heating season is in full-swing as cold weather crept in earlier than expected. And as temperatures continue to dive throughout the state heating bills will be moving in the opposite direction. In addition to straining our wallets, high energy bills can also signal energy waste.

Another indication that a home could be wasting energy is the existence of drafts and cold spots in the home. A lack of insulation and air sealing creates a condition where warm air escapes through the top of the house, and cooler air is then pulled in from below. As a result, we need to turn up the temperature, which makes the furnace work harder.

Energy waste is also observable from outside the home in the form of ice dams on the roof. **The main cause of ice dams is warm air escaping into an attic that is not properly sealed and melting the snow on the roof.** Many of us will notice some icicles during the winter months but in the more extreme cases excessive ice build-up can lead to water damage inside the home. If ice dams have been a persistent problem in past years your home could be trying to tell you something about energy efficiency.

If some of these symptoms such as high bills, draftiness or ice dams sound familiar your home would likely benefit from some basic energy efficiency improvements. A good first step is to schedule a Home Energy Squad® visit.

The Home Energy Squad® will visit your home to install energy saving products such as:

- LED bulbs
- Door weather-stripping
- Faucet aerators and shower heads
- Water heater wrap
- Programmable thermostat

At the same time, the Home Energy Squad® team will conduct an energy assessment that includes:

- Insulation inspection
- Blower door test
- Infrared camera
- Carbon monoxide safety check
- Help with next steps

The Home Energy Squad® is provided by Xcel Energy and CenterPoint Energy and delivered by the local nonprofit, Center for Energy and Environment (CEE).

**Schedule your home visit online at <https://mn.my.xcelenergy.com/s/residential/home-services/home-energy-squad> or call 651-328-6220.**



## Water Conservation Rebate Program

The City once again was awarded a Metropolitan Council Grant as part of the Council's 2019-2022 Water Efficiency Grant Program.

The amount of the grant is \$6,300. Mahtomedi is one of forty cities in the Twin Cities

Metropolitan Area that applied for and was accepted into this grant program.



Grant funds will be used for the City's ongoing water conservation program. The City is offering \$50 rebates to Mahtomedi Water Utility Households replacing washing machines or toilets. Residents can bring in their original purchase receipts and documentation of applicable required certifications (i.e. user manual) and get a \$50 check. Toilets must be labeled Water Sense Certified and use 1.28 gallons per flush. Washing machines must be Energy Star-Qualified High Efficiency Certified. Rebates are available on a first come first serve basis. One rebate check per household.

Forms are available on the City's website at [www.ci.mahtomedi.mn.us](http://www.ci.mahtomedi.mn.us). For more information, contact City Hall at 651-426-3344.

## DOO GOOD!

### Pick up dog doo. Protect streams.

Dog doo can pollute stormwater. Rain and melting snow flows across yards and trails, collecting in storm drains that lead directly to streams. Contaminated water can cause typhoid fever, viral and bacterial gastroenteritis and hepatitis A. Pet waste also contributes to algae growth, making our lakes and rivers green and unsightly.

In some urban areas, as much as 20% of water-borne bacteria can be traced to dog droppings. It has also been estimated that 100 dogs could contribute enough waste to contaminate a small lake or pond within only two to three days.

### BE A "DOO GOODER"

You can make a difference by being a responsible pet owner/guardian. Here are 4 tips every "Doo Gooder" should know:

**TIP 1:** Be prepared: carry poop bags with you. Take extra bags so you don't run out.

**TIP 2:** Make sure the bag ends up in a trash can.

**TIP 3:** When you hike, never leave a bag on the trail — there's nobody designated to pick them up!

**TIP 4:** Pick it up at home to keep your yard healthy and to protect streams.





# Tree Decay Compartmentalization

## Why Should We Care?

Tree compartmentalization is the process where trees construct walls internally to prevent the spread of decay. Trees have a core of wood (heartwood) that is non-functioning (consider it dead). The live part of a tree is the green layer under the bark where the vascular cambium is located. When a tree gets damaged or is pruned and bark is removed, an opening is created in the tree. This opening allows decay organisms to gain entrance into the inner dead areas of the tree. Decay organisms are Mother Nature's recyclers. They work to break down dead wood into its basic elements.

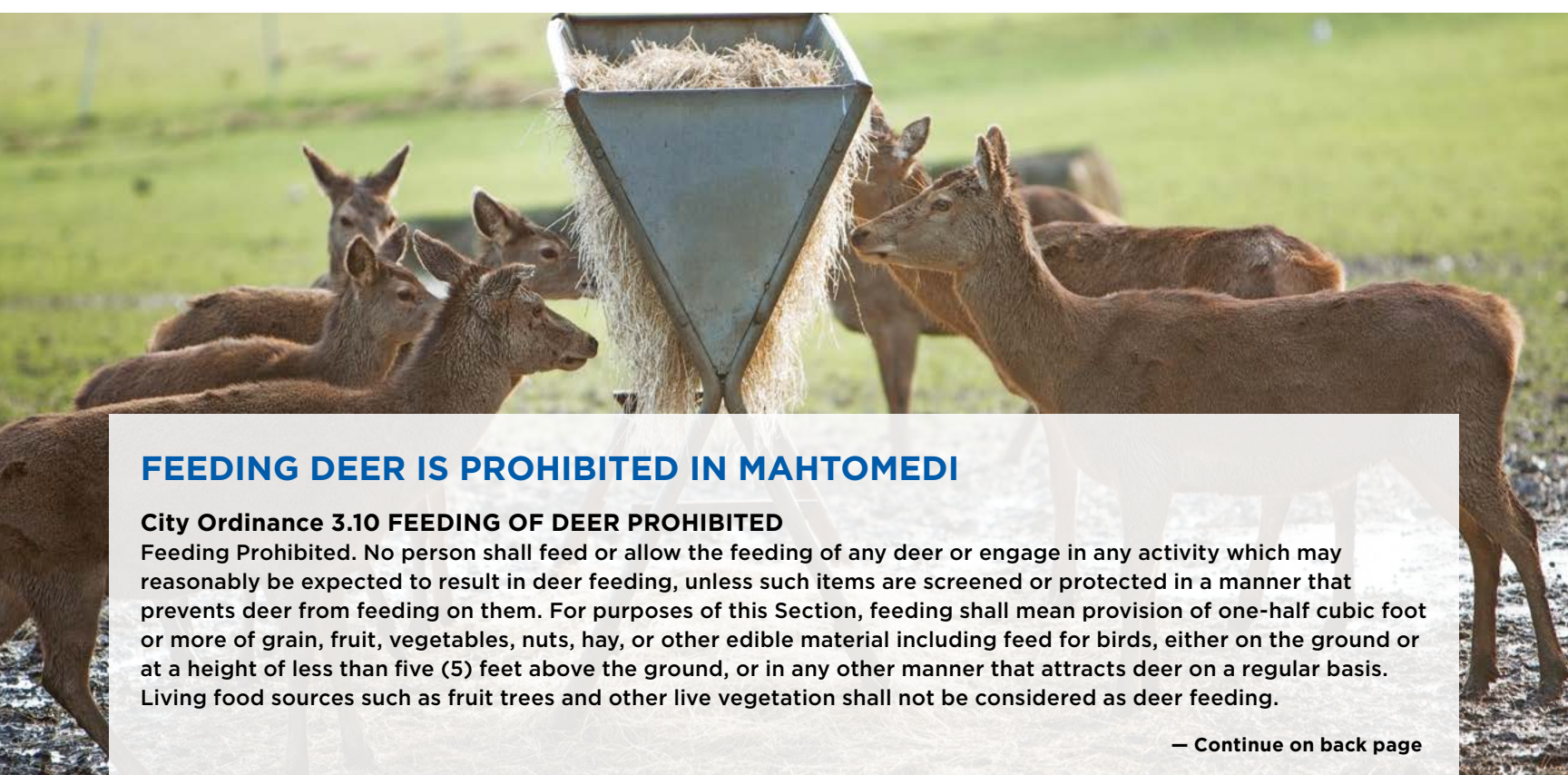
The heartwood of a tree is the main structural component that allows a tree to stand. Because decay is acting to weaken a tree's structural integrity, the tree needs to be able to control the spread of the decay. Trees work to control the spread by compartmentalizing the area of decay. This is accomplished by utilizing various tree structures to wall off the decay. Trees that are functioning properly can produce defensive chemicals that are deposited in these defensive walls. Some species of trees are very good at compartmentalizing while others do a very poor job. Good compartmentalizing species that are in poor health can also have a difficult time producing the defensive chemicals necessary for defense. A list describing the abilities of different species to compartmentalize can be found on the City of Mahtomedi website under Departments, Public Works, City Forester.

The significance of this compartmentalization comes into play when trees are pruned. Pruning a tree wounds the tree and

causes an opening. Softwood trees are poor compartmentalizers, so when they are pruned the decay process begins. Due to the inability of softwoods to control the spread of decay, the decay will spread internally and weaken the structural integrity of the tree. This has consequences when that tree may be close to any kind of infrastructure that may be damaged when the tree falls. It becomes important to consider these limitations when pruning trees or planning what trees to plant close to structures where these trees will likely have to be pruned.

Many hardwood trees on the other hand are good compartmentalizers, having the ability to wall off the decay, limiting spread and the negative consequences of the decay. The decay becomes a small pocket walled off from the rest of the tree. The tree then can grow new solid wood outside of this pocket and minimize any structural weakening. It's a good idea to become familiar with this process when you're making decisions about your trees. All species of trees have their good points and their bad points. The trick is getting the right trees in the right place, taking advantage of the tree's good characteristics, and minimizing its bad.

Hiring a qualified and certified arborist that can advise you on what tree species you have and what capabilities your trees have is a good idea. Making those planting and pruning decisions are an important part of ensuring that your trees are healthy and as safe as we can make them. Check out the city website for a list of tree companies licensed in Mahtomedi. You can also call the City Forester at **651-747-3736**.



## FEEDING DEER IS PROHIBITED IN MAHTOMEDI

### City Ordinance 3.10 FEEDING OF DEER PROHIBITED

**Feeding Prohibited.** No person shall feed or allow the feeding of any deer or engage in any activity which may reasonably be expected to result in deer feeding, unless such items are screened or protected in a manner that prevents deer from feeding on them. For purposes of this Section, feeding shall mean provision of one-half cubic foot or more of grain, fruit, vegetables, nuts, hay, or other edible material including feed for birds, either on the ground or at a height of less than five (5) feet above the ground, or in any other manner that attracts deer on a regular basis. Living food sources such as fruit trees and other live vegetation shall not be considered as deer feeding.

— Continue on back page

## Mahtomedi: A "Small Town" City

**Close knit small town atmosphere.** Residents have strong connections with each other and take pride in the community. By working together to maintain the small town atmosphere, residents, business and community leaders have created a safe environment in which to live, work and learn.

**Natural Resources.** The abundance of bodies of water, vegetation and nature areas create a natural setting for City parks for residents to enjoy.

**Excellent Education.** The educational system and educational opportunities provided in cooperation with the Mahtomedi School District and Community Education creates an informed community.

**Location.** Located on the east shore of White Bear Lake, within twenty minutes of Minneapolis and St. Paul with direct access to Interstate 694 provide residents and businesses with a place to call home.

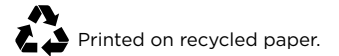
**History.** The history of the Chautauqua Association, Wildwood Amusement Park, cottages, street cars and summer resorts have contributed to the historical significance of the community.

## City of Mahtomedi

600 STILLWATER ROAD  
MAHTOMEDI, MN 55115

PRESORTED  
STANDARD  
U.S. POSTAGE  
**PAID**  
TWIN CITIES, MN  
PERMIT NO. 4693

ECRWSSDDM  
POSTAL CUSTOMER



## [ FIRE DEPARTMENT NEWS ]

### House Number Visibility

Firefighters, Police and Paramedics rely on visible house numbers in order to assist quickly when time counts. In some cases, saving lives and property comes down to a matter of seconds. Street addresses need to be visible both day and night.

Some helpful safety tips to improve address visibility:

- House numbers should be visible from the street.
- If your house is set back, affix numbers to your mailbox or post that can be seen from the public road and alleyway if the best access is that alleyway.
- If possible, post your address near a porch light, or at least use reflective numbers.
- House numbers should be at least 4 inches tall.

Please do your part in protecting you and your family. Even the little things help!



### Feeding Deer is Prohibited in Mahtomedi, *continued from page 3*

#### MN DNR DEER FEEDING AND ATTRACTANTS BANS

Feeding and attractant bans are in place across the state to prevent concentrations of wild deer in areas with a higher risk for disease. These bans are precautionary steps the DNR took after deer that tested positive for chronic wasting disease were found both in the wild and on deer farms. Feeding bans encompass wider areas because food sources can concentrate deer and allow for close contact — one of the mechanisms for CWD spread.

- **Deer feeding includes:** placement or distribution of grains, fruits, vegetables, nuts, hay and other food that is capable of attracting or enticing deer.
- **Deer attractants are:** natural or manufactured products that are capable of attracting or enticing deer, including salt, minerals, liquid food scents, or any product that contains or claims to contain cervid urine (example "doe in heat"), blood, gland oil, feces or other bodily fluid.

People who feed birds or small mammals must do so in a manner that prevents deer access. Place the food at least six feet above ground level. Food placed as a result of normal agricultural practices is generally exempt from the feeding ban. Cattle operators should take steps that minimize contact between deer and cattle.

For more information please visit:

<https://www.dnr.state.mn.us/cwd/feedban.html>



#### WHAT COUNTIES ARE CURRENTLY AFFECTED?

Deer feeding and attractants ban affect the following counties: Aitkin, Cass, Crow Wing, Dakota, Dodge, Fillmore, Freeborn, Goodhue, Hennepin, Houston, Hubbard, Mille Lacs, Morrison, Mower, Olmsted, Ramsey, Rice, Scott, Steele, Todd, Wabasha, Wadena, Washington, Winona